

# XMIM Product News



**12301 Research Blvd.  
Building IV, Suite 410  
Austin, TX 78759**

**U.S. Help Desk Phone: +1-800-546-9646 (or direct +1-512-697-3000), select ext. 3400**

**U.K. Help Desk Free Phone: 0800 032 6063**

**Europe Help Desk Phone: +44 20 7190 2947**

**Help Desk Email: [support@lim.com](mailto:support@lim.com)**

**+1-512-697-3001 (Fax)**

Build Number: 6.0.2

Part Number: 078\_89

Date: August 10, 2007

Copyright © 2007 by Logical Information Machines, Inc.

Patented May, 1995 U.S. Patent No. 08/392, 612

All rights reserved.

®Excel is a registered trademark of the Microsoft Corporation.

No part of this publication may be reproduced, stored in a retrieval system, or transmitted in any form or by any means, electronic, mechanical, photocopying, recording, or otherwise, without the prior written permission of Logical Information Machines, Inc.

Restricted Rights Legend

Use, duplication, or disclosure by the Government is subject to restrictions as set forth in subdivision (c) (1) (ii) of the Rights in Technical Data and Computer Software clause at 252.227-7013.

Logical Information Machines, Inc.  
120 North LaSalle Street  
Suite 2150  
Chicago, IL 60602

(312) 456-3000

Product names mentioned herein are for identification purposes only and may be trademarks and/or registered trademarks of their respective companies.

While every precaution has been taken in the preparation of this manual, we assume no responsibility for errors or omissions. Neither is any liability assumed for damages resulting from the use of the information contained herein. Logical Information Machines, Inc. may revise this publication from time to time without notice.

---

# Table of Contents

<b>XMIM Product News</b> .....	<b>1</b>
Introduction .....	1
Release 6.0.2 .....	2
Report Options .....	2
Release 6.0.0 .....	3
New Design .....	3
Query Wizard .....	4
Query Builder .....	7
How Do I Say .....	9
Online Help .....	9
My Queries .....	10
Templates .....	10
Paste to Excel from Report .....	11



---

# XMIM Product News

## Introduction

XMIM is a software package for evaluating trade opportunities designed with a near English interface for easily constructing queries about historical data.


This document illustrates the enhancements made to the XMIM software for the latest releases. For details on bug fixes and a complete list of all changes, please see the [XMIM Release Notes](#) . For instructions on using the XMIM software, see the following guides: [XMIM Energy Training Guide](#) and [XMIM Financial Training Guide](#) as well as the [XMIM User Guide](#) , and the [Profit/Loss User Guide](#) for details on constructing profit/loss queries.

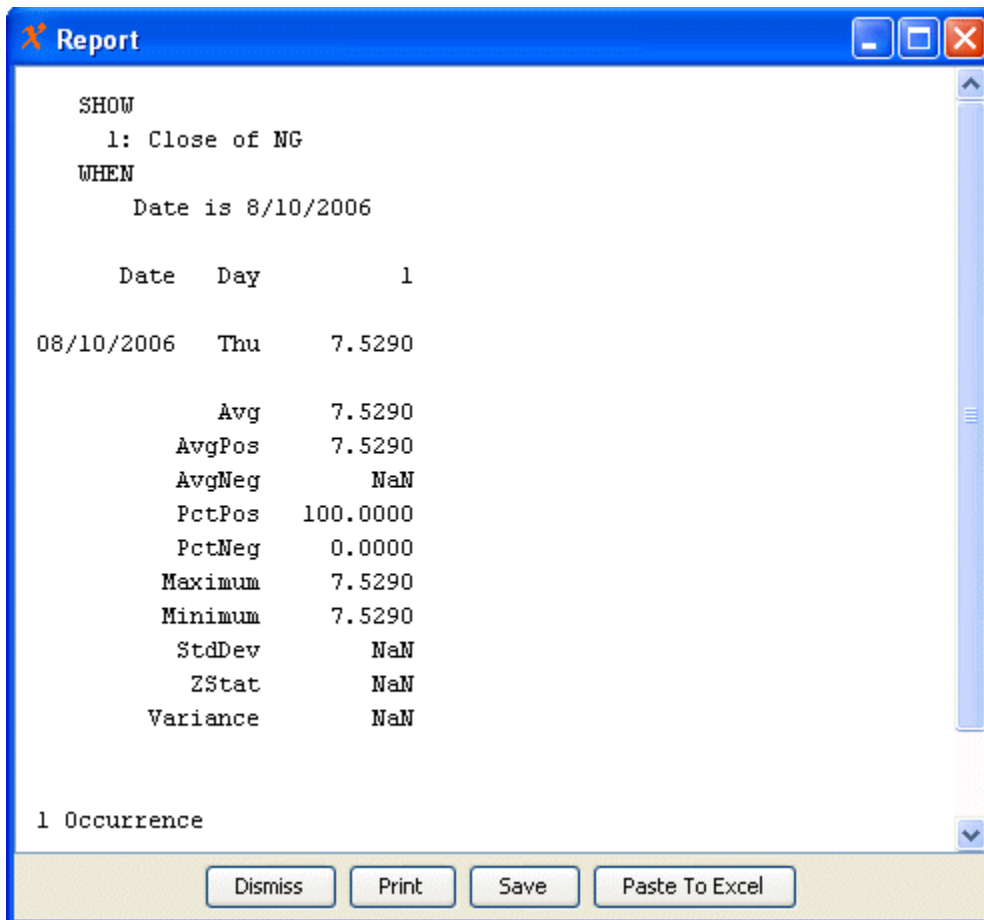
## Release 6.0.2

This release also contains bug fixes. Please see the [XMIM Release Notes](#) for more information.

Please see the newly added documentation for [Analog Queries](#).

## Report Options

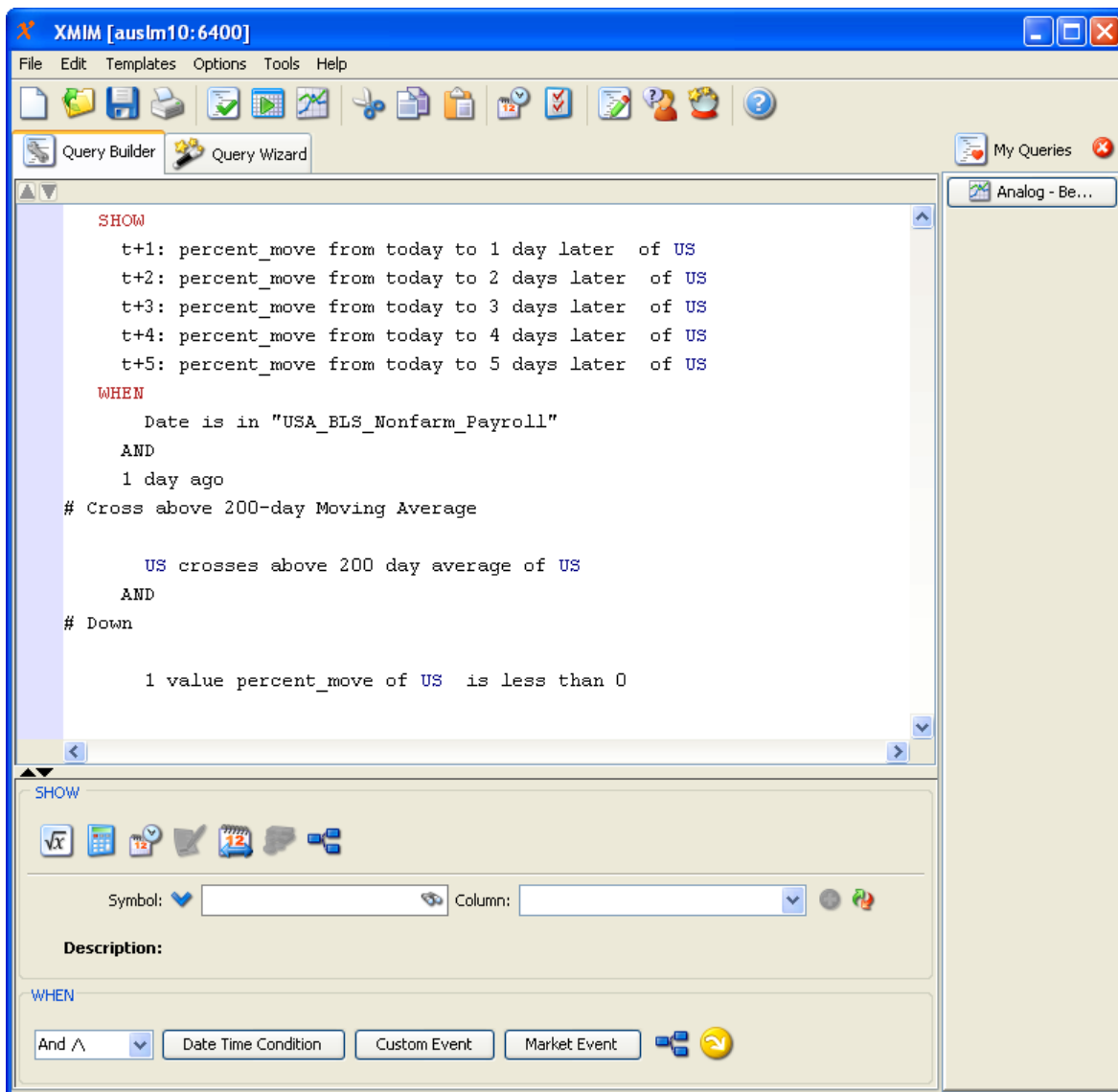
Open the **User Preferences** window (select Options>User Preferences from the menu bar). In the **Report Options** pane check the box for **Show Query in Report Window** (option is unchecked by default). Select **OK** to close the **User Preferences** window. Now when you create a query and select the **Report**  button your query will display at the top of the **Report** window.



# Release 6.0.0

## New Design

XMIM is easier to use with a flattened layout. The design has been retooled so that the user can make query selections using less sub-menu selections.



## Query Wizard

The new **Query Wizard** window is designed to assist users in creating sophisticated event-driven queries.

The pre-defined **SHOW** statement allows users to specify the type of study to apply to their specific symbol and what granularity of time is to be studied and how far out past their event date to look.

The **WHEN** condition contains date events and market events. Date events contain important report release date files, important meeting dates or other various event dates that affect the market. The market events contain pre-built **WHEN** condition statements about popular analysis criteria like new highs or cross-overs.

Example:

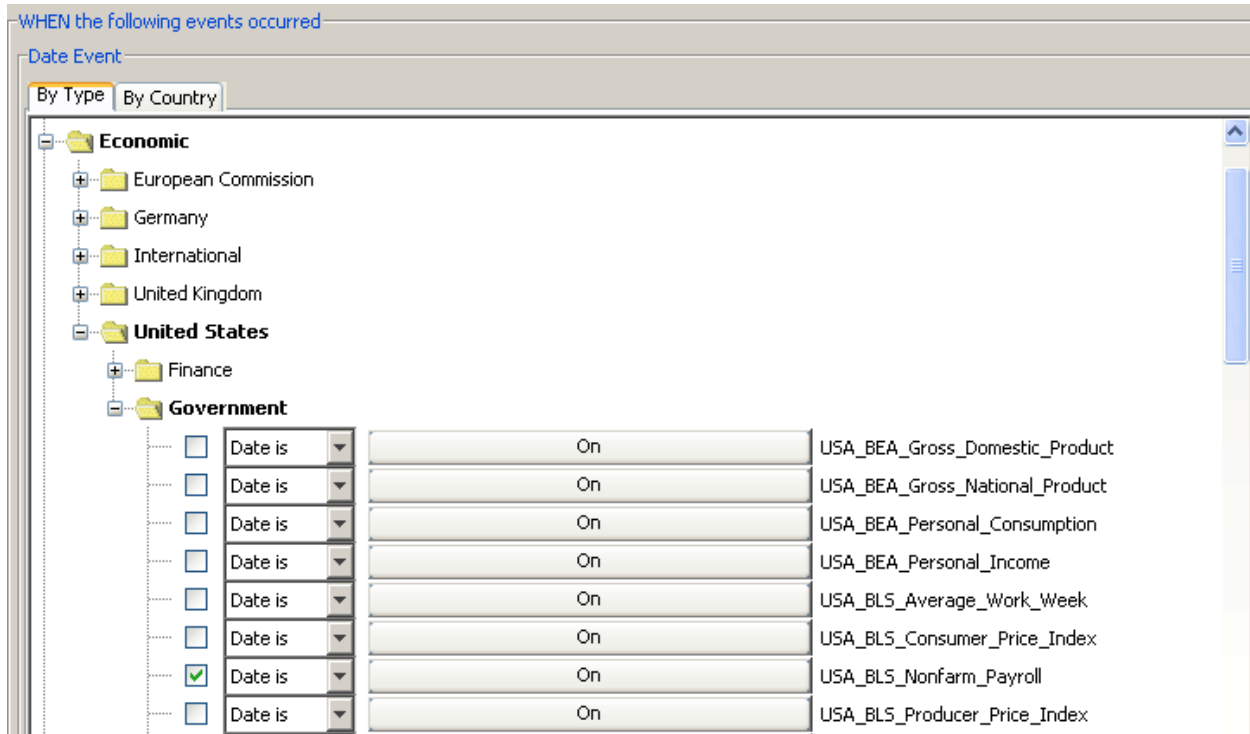
Using the new Query Wizard, it takes just a few clicks to create a query that shows: What's happened in the past to the US Treasury Bond Future following a Non-Farm Employment report and US is down but the day before the Future crossed above its 200 day average?

Using the **SHOW** statement, users can choose to perform the analysis in terms of total return, % move, or move. For this example, fill in the statement to say: show what happened in terms of % move to US every day over the next week. Upon completion, the **SHOW** statement is built automatically for the user.

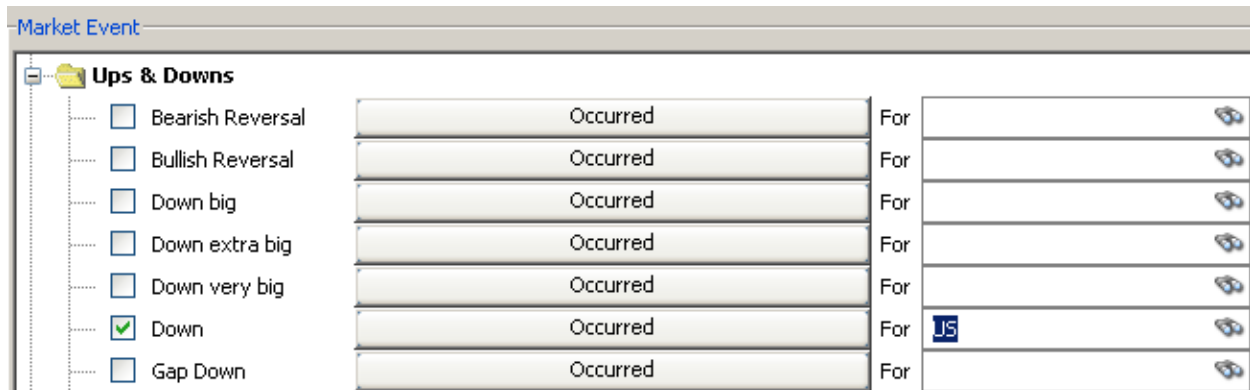
The screenshot shows a configuration window for the **SHOW** statement. The text reads: "What happened in terms of **Percent Move** to **US** every **Days** over the next **1** **Weeks**". Below this, a **Description** field contains the text: "CBOT: 30 Year U.S. Treasury Bonds Futures: Open Auction Session".

Then, to add conditions to the query, use the **Date Event** and **Market Event** panels.

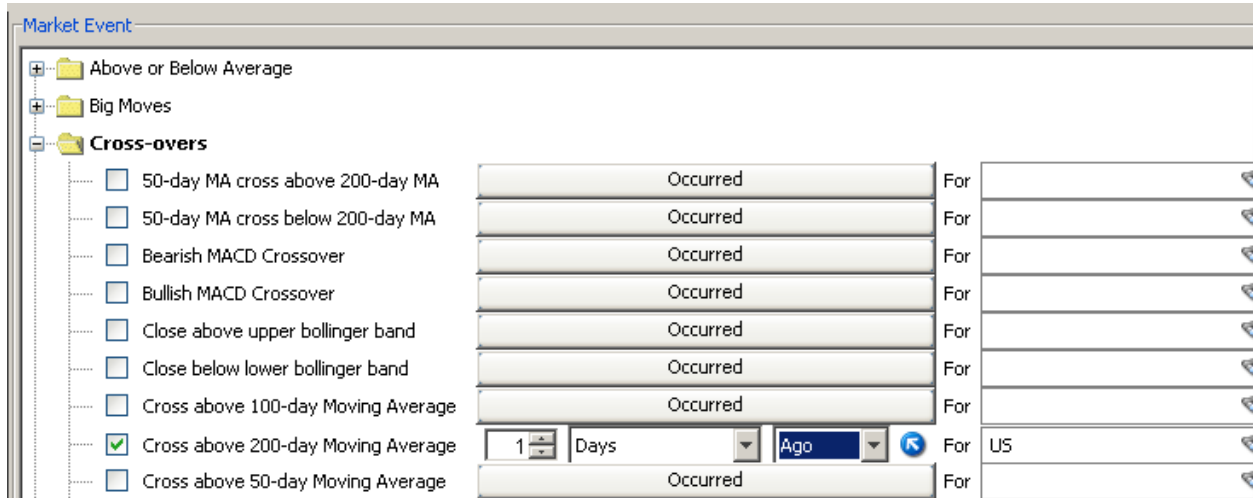
In the **Date Event** window, locate the Non-Farm Payroll date event by going to **Economic>United States>Government**. Select the check box next to **USA\_BLS\_NONFARM\_PAYROLL**. Notice that the syntax has been added.



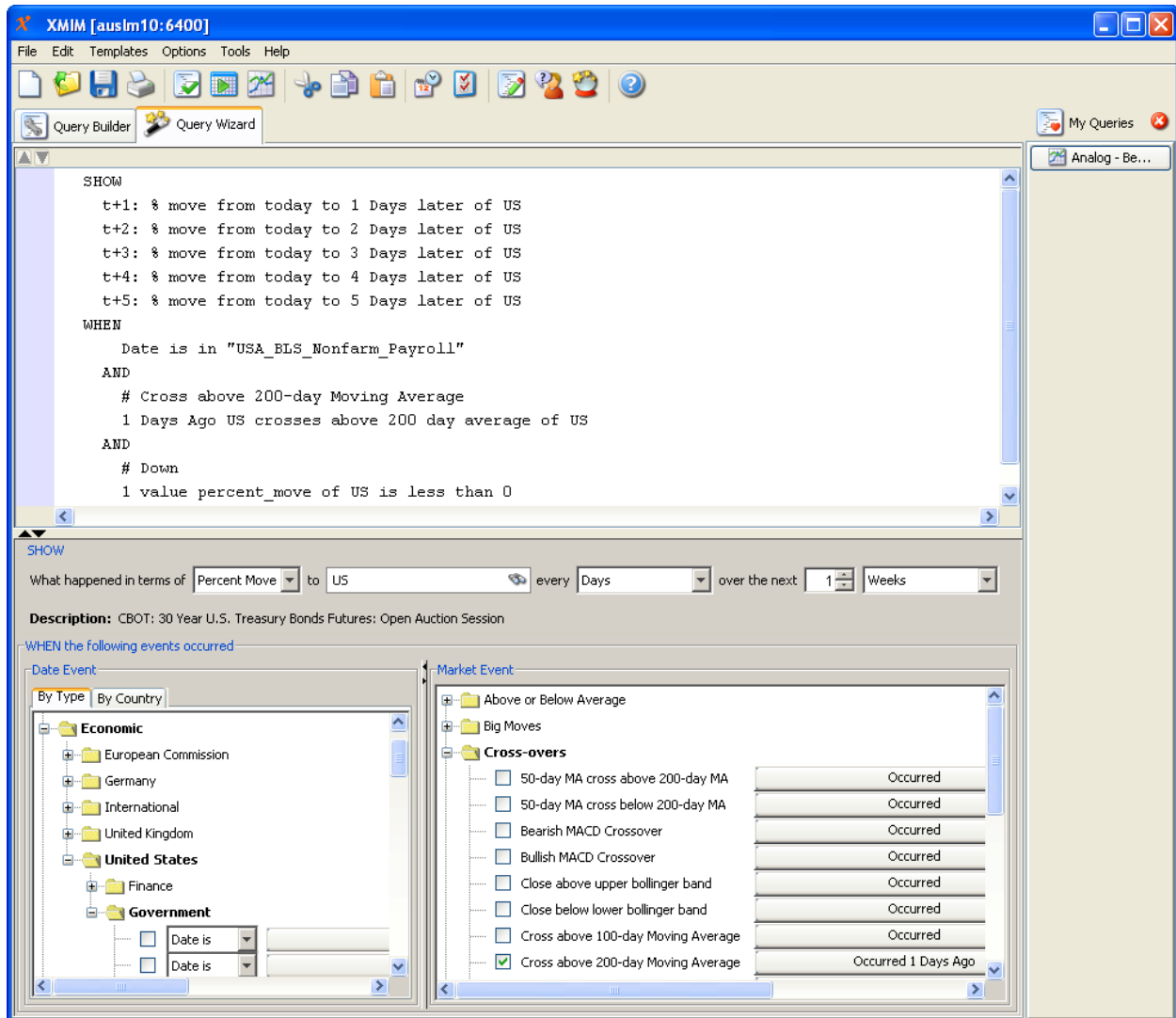
Then in the **Market Events** panel, go to **Ups & Downs** and check the box next to **Down**. Notice that the symbol fills in automatically.



Select **Cross-overs** and check the box next to **cross above 200 day moving average** and select the **Occurred** button to select **1 day ago**.




The query is complete. If desired, you can see the results of the query by selecting the **Report** button from the toolbar.

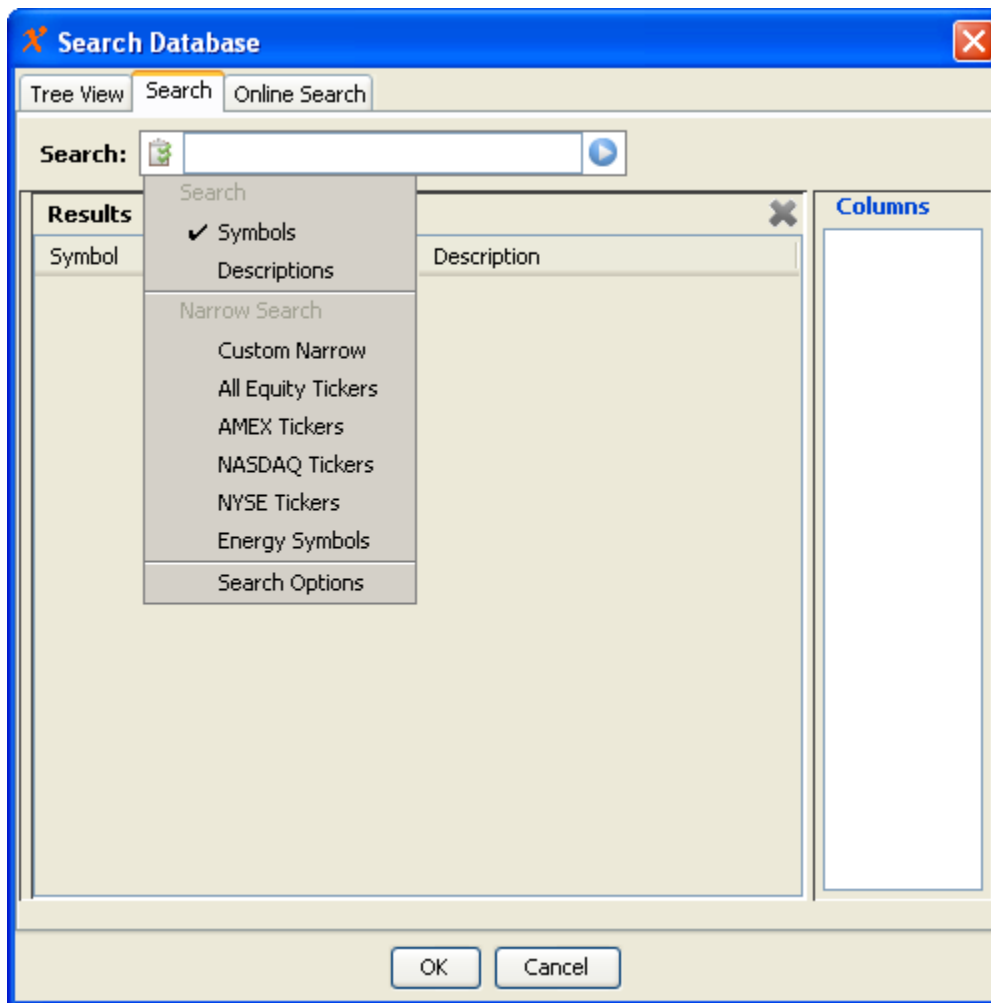


## Query Builder


The **Query Builder** window is easier to use with improvements to the SHOW and WHEN panels.

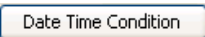
All of the functions in the Attribute have been translated into buttons and are located in the Query Builder, eliminating a level of nested windows.


A new **Search Database**  feature is available for improved navigation of the database. Search functions include searching within your own database and the LIM on-line database catalog. The following shows the **Search Database** window:



A new shortcuts functionality that reorganizes the database into various sorts will soon be available.


A new **Edit Rollover**  function is available for customizing futures contract rollover policies. A wide variety of settings are available and this window will create the necessary LET statement for the user.

Changes made to the WHEN condition options makes adding criteria to queries simple. The new **Date Time Condition**  window allows for multiple date and time conditions to be added at once.


The **Custom Events**  button, formerly known as Daily Tick is a more user-friendly way to construct the users own events.

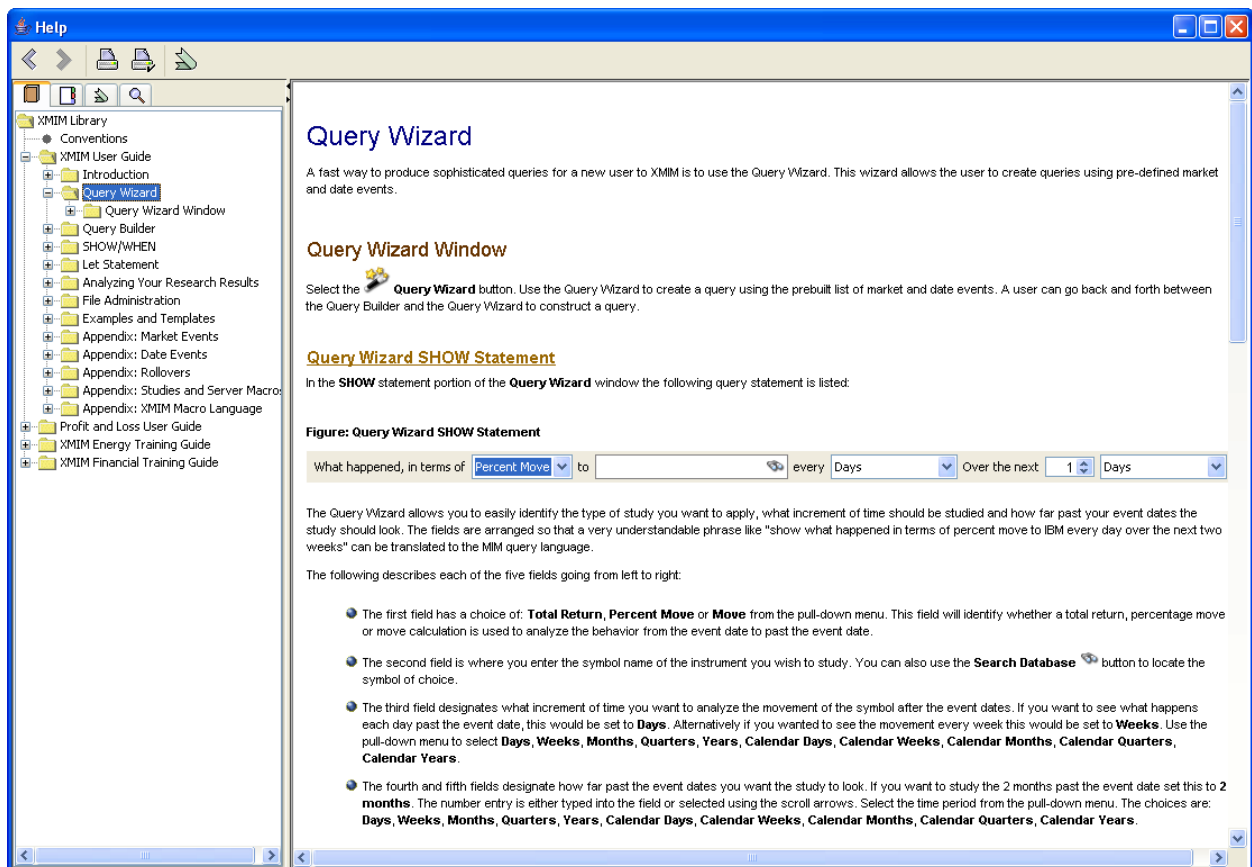
The pre-defined **Market Events** Market Event (also available in the Query Wizard) are available in the Query Builder for convenience so that these complex conditions can be easily added to any query.

## How Do I Say

There is a new **How Do I Say**  button to assist with turning difficult phrases into the query language. This function provides a library of query syntax for challenging phrases and allows the user to customize the phrase if necessary and add it to a query. The user is also able to add their own phrases for easy retrieval.

## Online Help

A searchable **Help** menu includes user and training guides as well as context-sensitive help. Select the Help  button then select the portion of the window that you would like to pin-point specific subject information.

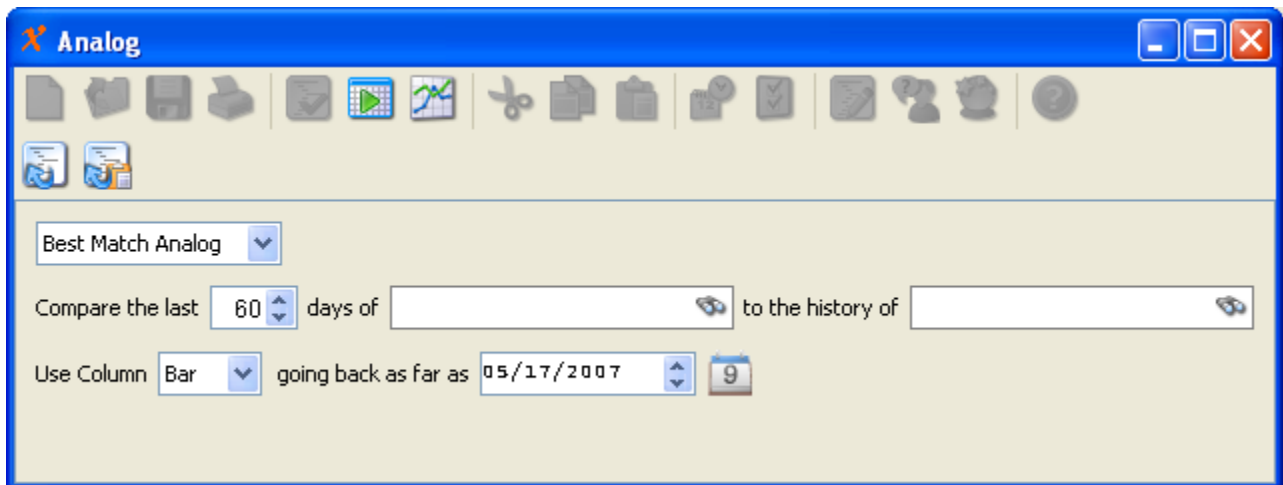


## My Queries


The **My Queries** panel provides a place to store and have easy access to the queries you would like to run regularly. XMIM is pre-loaded with the best match analog in the My Queries pane. With just a click of the button, the graph will generate, showing the historical match of the S&P 500 index over the last 200 days.

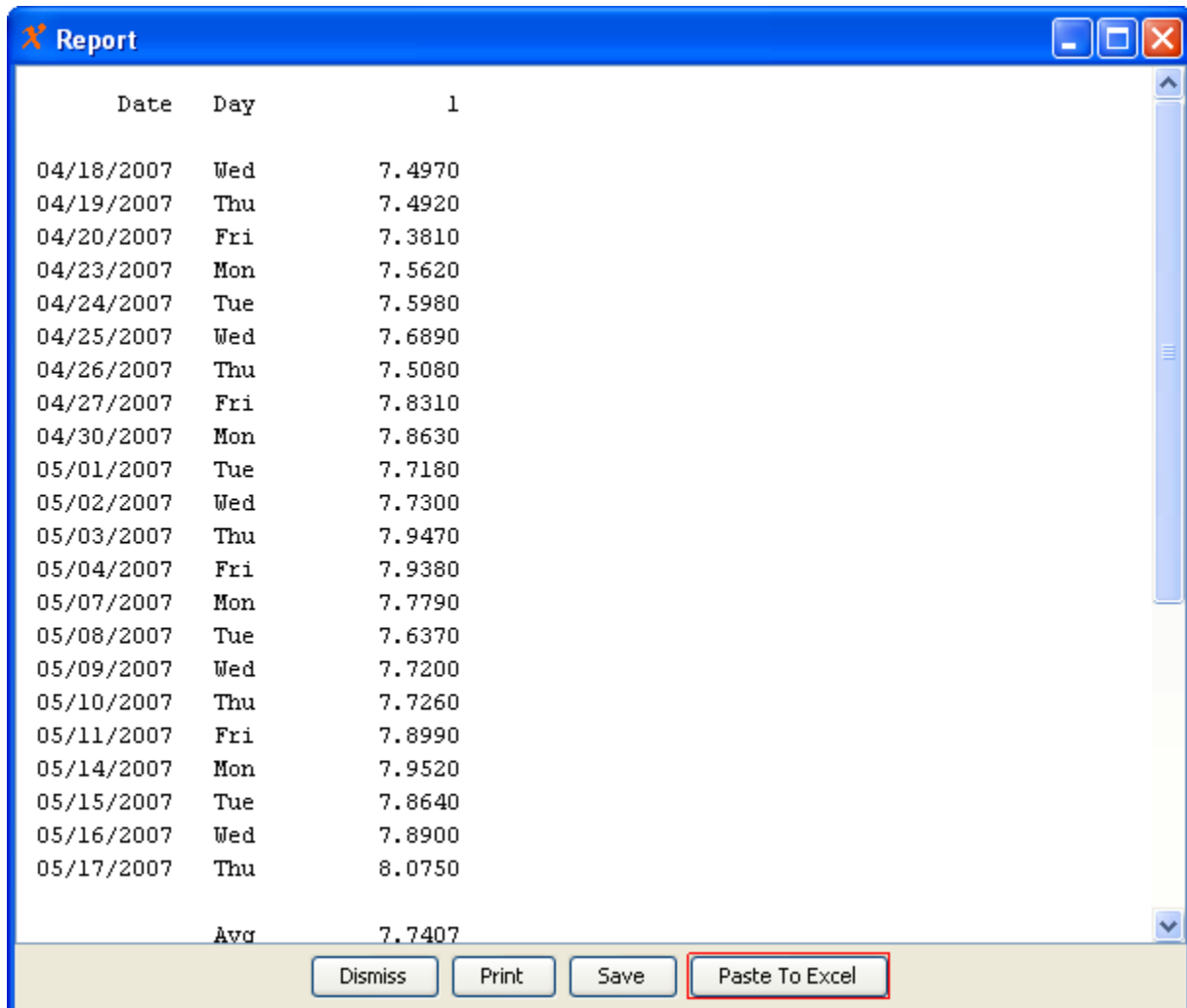
## Templates

Use the **Templates**  button to quickly edit LIM provided queries such as the Best Match Analog or Threshold Analog query.



## Paste to Excel from Report

When you are in a **Report** window (select the **Report**  button to generate a report of a query) you now can paste the report results to an Excel® worksheet. User settings are available to customize this feature. Just select **Options>User Preferences** from the menu bar.



The screenshot shows a window titled "Report" with a blue header bar. The window contains a table with the following data:

Date	Day	1
04/18/2007	Wed	7.4970
04/19/2007	Thu	7.4920
04/20/2007	Fri	7.3810
04/23/2007	Mon	7.5620
04/24/2007	Tue	7.5980
04/25/2007	Wed	7.6890
04/26/2007	Thu	7.5080
04/27/2007	Fri	7.8310
04/30/2007	Mon	7.8630
05/01/2007	Tue	7.7180
05/02/2007	Wed	7.7300
05/03/2007	Thu	7.9470
05/04/2007	Fri	7.9380
05/07/2007	Mon	7.7790
05/08/2007	Tue	7.6370
05/09/2007	Wed	7.7200
05/10/2007	Thu	7.7260
05/11/2007	Fri	7.8990
05/14/2007	Mon	7.9520
05/15/2007	Tue	7.8640
05/16/2007	Wed	7.8900
05/17/2007	Thu	8.0750
	Avg	7.7407

At the bottom of the window, there is a control bar with four buttons: "Dismiss", "Print", "Save", and "Paste To Excel". The "Paste To Excel" button is highlighted with a red rectangular box.

